

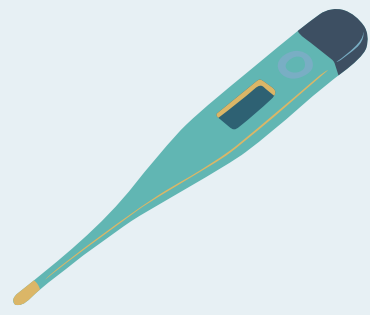
# Questions for health check



Did you have one or more of these complaints in the past 24 hours?



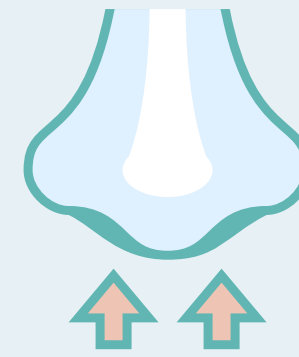
Cough



Increased temperature or fever



Shortness of breath



Loss of taste and / or smell

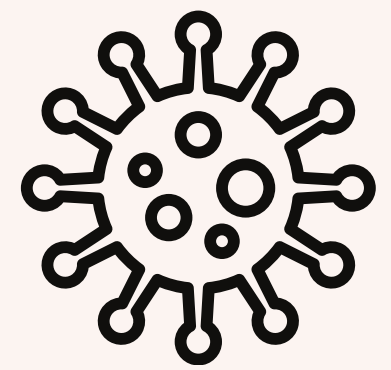


Common cold complaints (like a nose cold, runny nose, sneezing, a sore throat)

Do you currently have a housemate with mild complaints and a fever and / or shortness of breath?



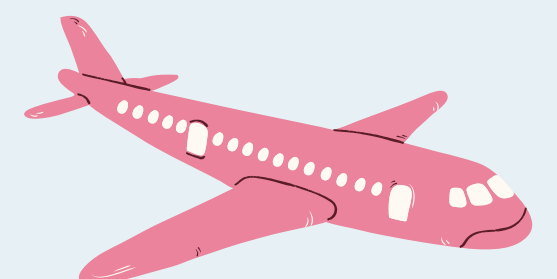
Have you had the new coronavirus and has this been diagnosed in the past 14 days (with a test)?\*



*\*Follow the advise of the GGD*

Are you in quarantine (10 days) because you:

- are a housemate or close contact of someone who has been diagnosed with the new coronavirus?
- have travelled (back) from a COVID-19 high risk area (code orange/red)?\*\*
- have been warned by the Coronamelder-app?



*\*\*More info: [www.wijsopreis.nl](http://www.wijsopreis.nl)*

If one of the questions is answered with yes, it is not possible to participate in a studio class/workshop/session. Join online if possible.